

# twist

design:  
**Karim Rashid**

Ottone stampato a caldo  
*Hot stamped brass*



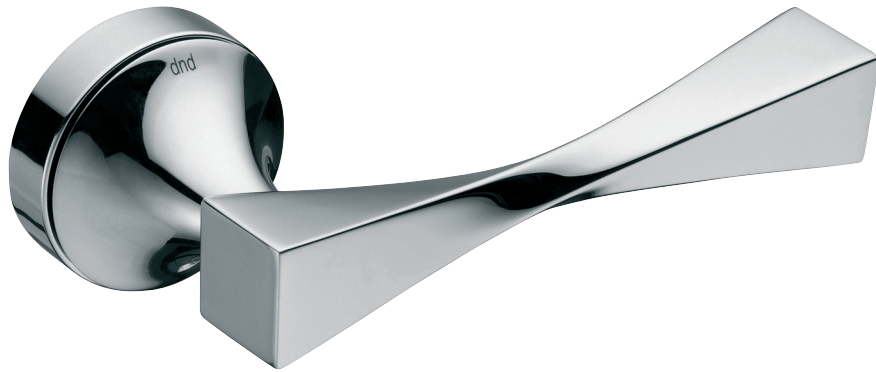
**OC**  
Power cromo lucido  
*Power polished chrome*



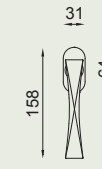
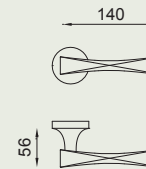
**PCS**  
Power cromo satinato  
*Power satin chrome*



**ONS\***  
Nickel satinato  
*Satin nickel*



**\* su ordinazione / on demand**



**VIS** TW12

**VIS** TW22V

**FINE** TW40

**🔒** TW22TS

**R** TW14

**TW14**  
OC

160-

dnd 2018/2019

161